

YEPA 2

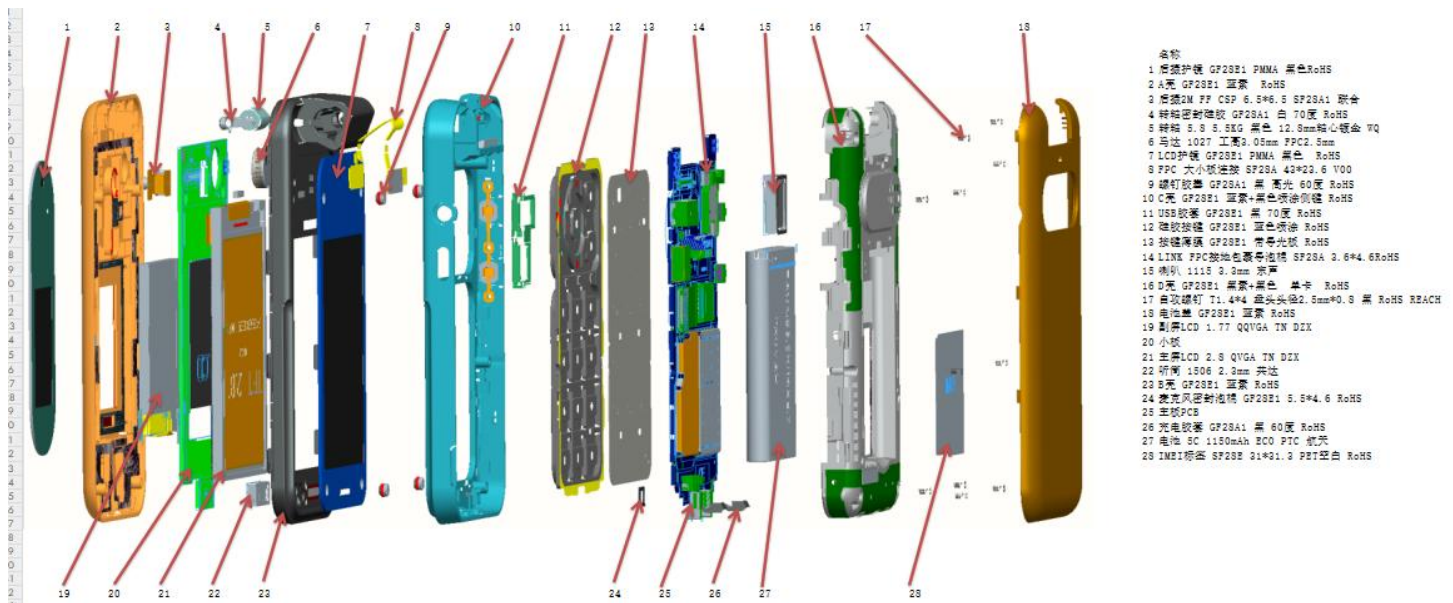
Disassembly and Assembly procedure

SUMMARY

1 INTRODUCTION.....	3
2 TOOLING DEFINITION.....	4
3 DISASSEMBLING PROCEDURE	5
3.1 REMOVE THE BATTERY COVER.....	5
3.2 REMOVE THE SCREWS	5
3.3 REMOVE THE LOWER HOUSING ASSEMBLY	5
3.4 REMOVE THE PCBA	6
3.5 DISASSEMBLE THE PCBA	6
3.6 DISASSEMBLE THE FLAP B.....	7
3.7 REMOVE THE 2.8 LCD AND 1.77 LCD.....	8
3.8 REMOVE THE RECEIVER AND MOTOR	9
3.9 REMOVE THE KEYPAD AND SPEAKER	9
4 ASSEMBLING PROCEDURE	11
4.1 ASSEMBLE THE KEYPAD AND SPEAKER	11
4.2 ASSEMBLE THE RECEIVER AND MOTOR	11
4.3 ASSEMBLE THE LCD AND BACK CAMERA.....	12
4.4 ASSEMBLE THE FLAP B.....	12
4.5 ASSEMBLE COMPONENTS ON THE UPPER HOUSING	13
4.6 ASSEMBLE THE DOME.....	13
4.7 ASSEMBLE THE PCBA	13
4.8 ASSEMBLE THE LOWER HOUSING ASSEMBLY	14
4.9 ASSEMBLE THE SCREW.....	14
4.10 ASSEMBLE THE BATTERY COVER.....	15

1 Introduction

The purpose of this document is to explain how to disassemble and assemble SF28E GF28E1 product. Detailed steps are mentioned with warnings as below.



YEPA 2 Disassembly&Assembly procedure

2 Tooling definition

Forceps



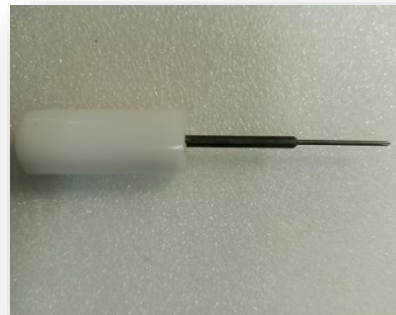
Plastic Card



Electric Screwdriver



Manual Screwdriver



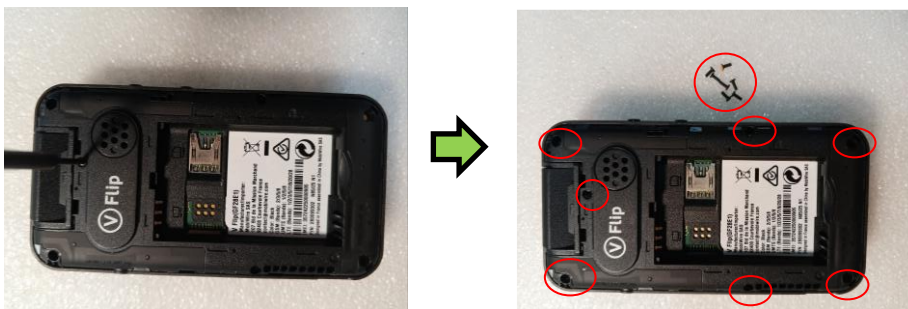
3 Disassembling procedure

3.1 Remove the battery cover



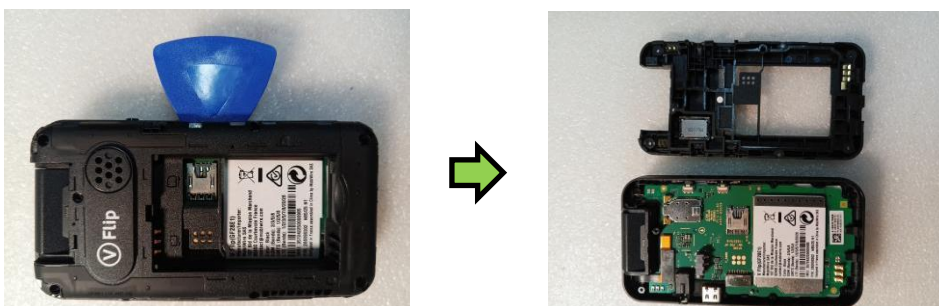
Remove the battery cover by opening the special slot.

3.2 Remove the screws



Remove the screws (qty=7) by using the screwdriver carefully.

3.3 Remove the lower housing assembly



Remove the lower housing from the upper housing assembly by plastic card and please start from the bottom of the product and then along the sides to open the lower housing assembly carefully.

3.4 Remove the PCBA



Disconnect LINK FPC with the PCBA, remove the PCBA by forceps.

3.5 Disassemble the PCBA



Remove USB Rubber and MIC Rubber from PCBA by forceps. And remove charger spring clip cover from PCBA by forceps.

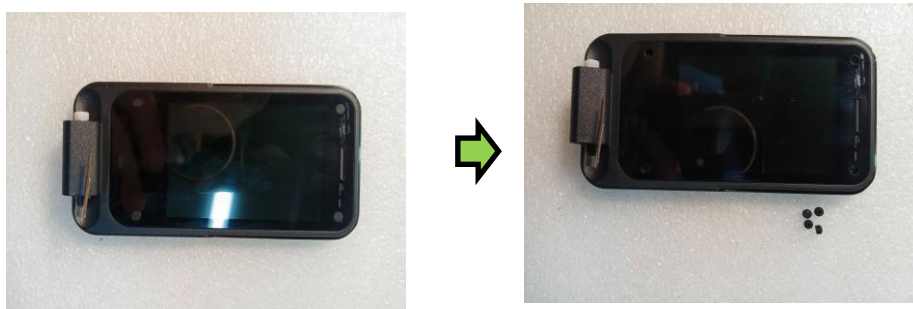


Remove the metal dome from PCBA by forceps.

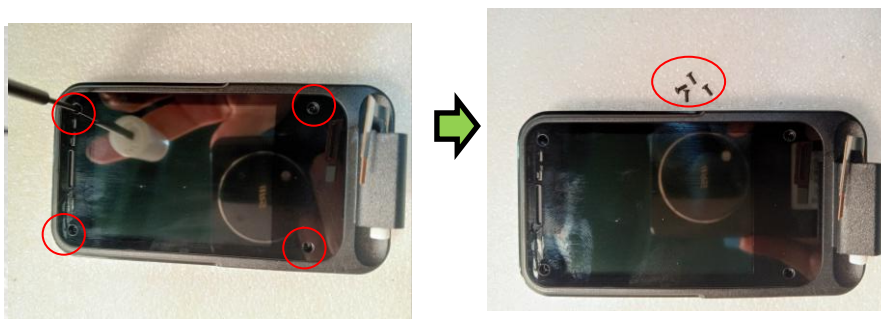
3.6 Disassemble the Flap B



Remove the Flap B from upper housing by using forceps to push in FLAP Hinge Unit carefully.



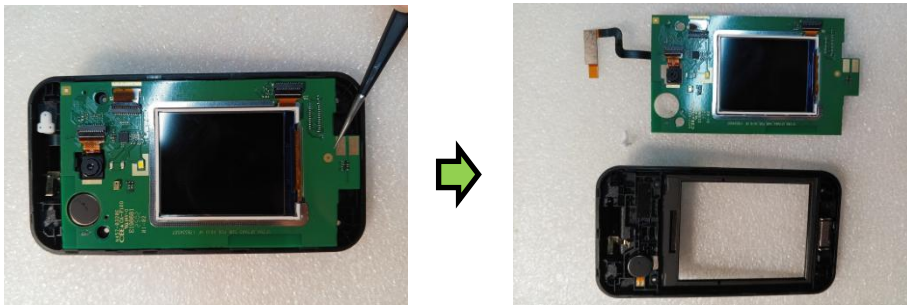
Remove screws rubber plug(qty=4) on the Flap B by screwdriver.



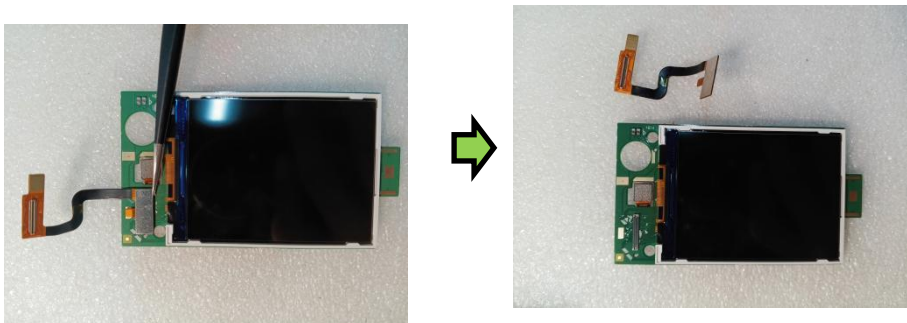
Remove screws (qty=4) on the Flap B by screwdriver.



Carefully separate the Flap B along the edge with a hard plastic plate.

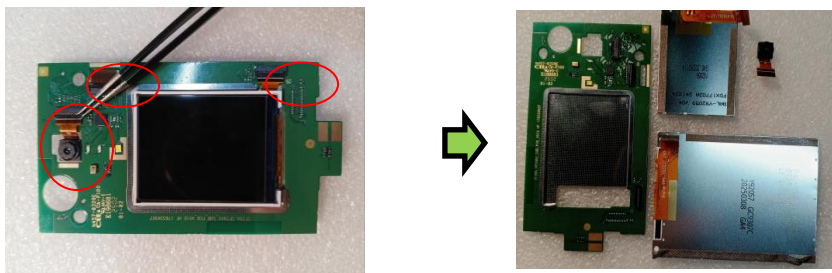


Remove the Sub PCB from the front housing.



Disconnect LINK FPC from the Flap B by forceps.

3.7 Remove the 2.8 LCD and 1.77 LCD



Disconnect the LCD FPC and remove 2.8 LCD and 1.77 LCD from Sub PCB by using the forceps.
Remove the camera from the Sub PCB

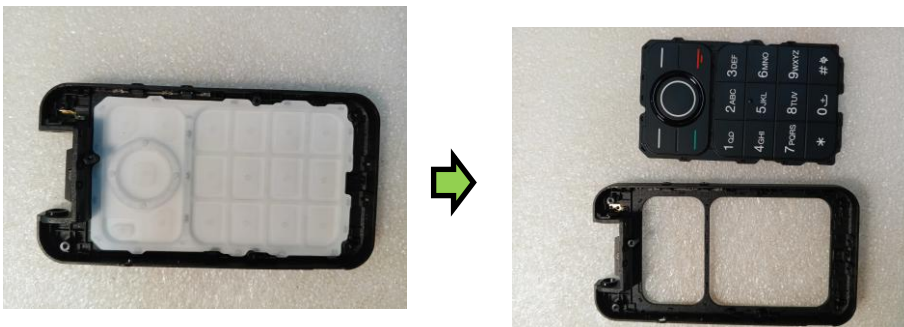
YEPA 2 Disassembly&Assembly procedure

3.8 Remove the receiver and motor



Remove the motor and receive from the front housing by using the forceps.

3.9 Remove the keypad and speaker



Remove Keypad from the front housing.

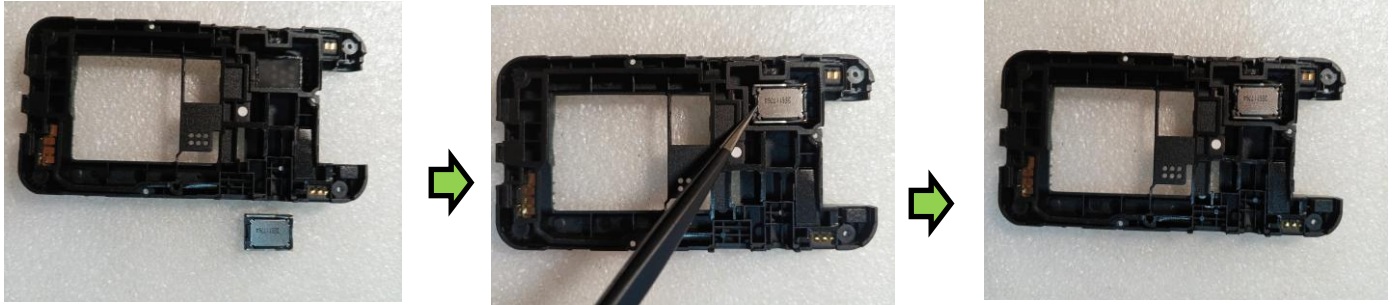


YEPA 2 Disassembly&Assembly procedure

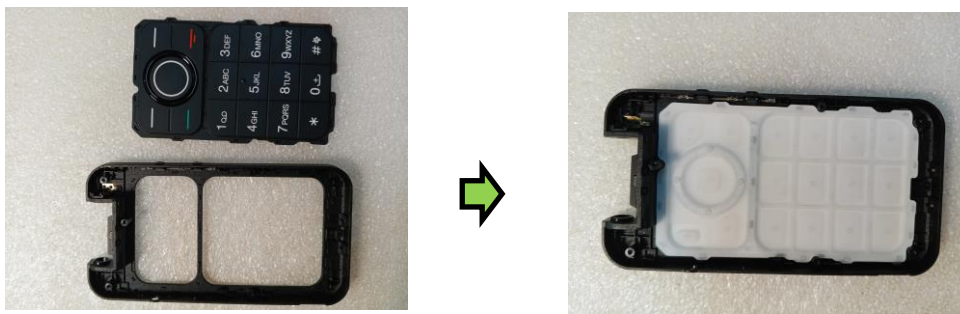
Remove Speaker from the lower housing by forceps.

4 Assembly procedure

4.1 Assemble the keypad and speaker



Assemble the Speaker to the corresponding position in lower housing.



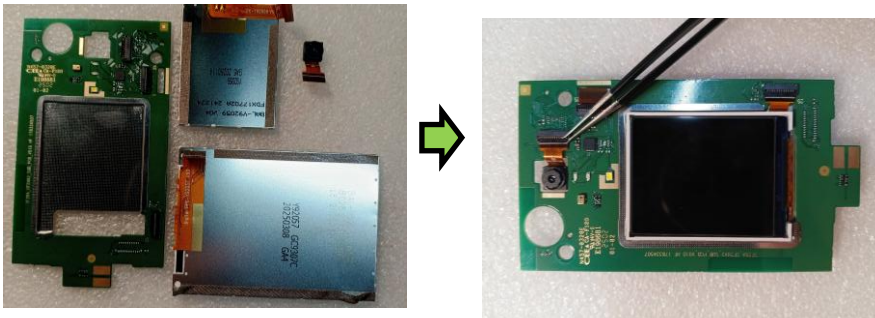
Assemble the keypad to the corresponding position in front housing.

4.2 Assemble the receiver and motor



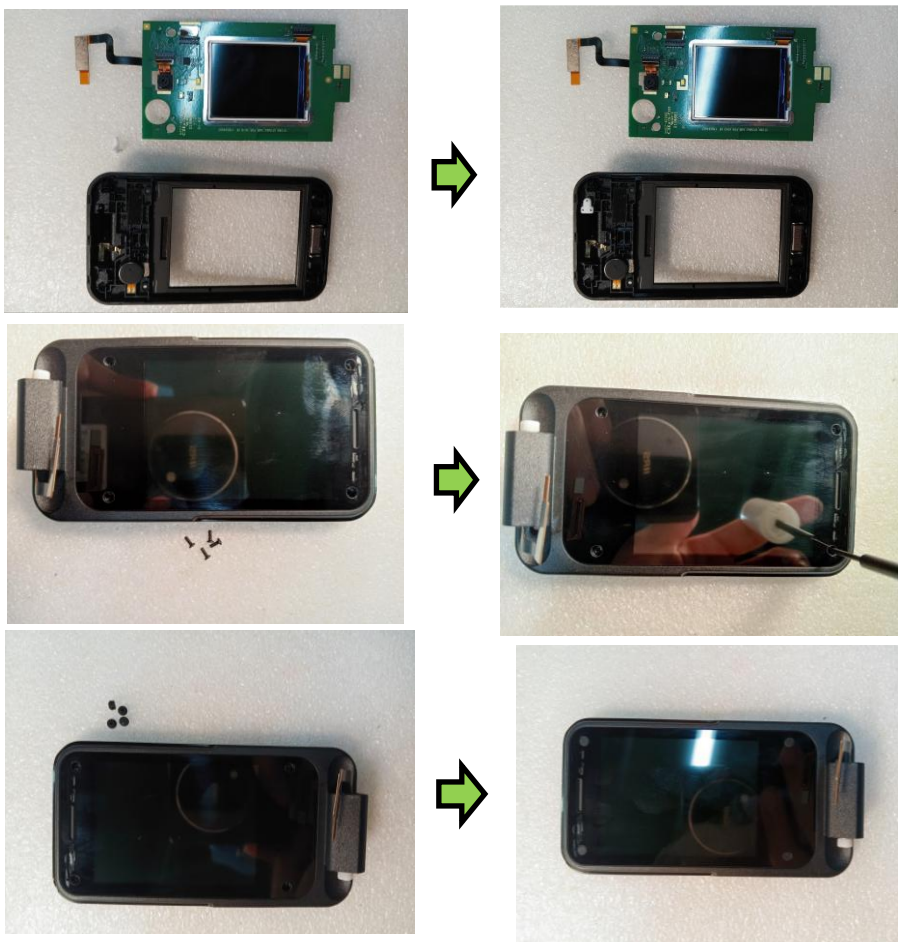
Assemble the motor and receiver from the front housing by using the forceps. Remove the LINK FPC in the front housing.

4.3 Assemble the LCD and back camera



Assemble 2.8 LCD and 1.77 LCD in Sub PCB by using the forceps. Connect the Link FPC to the Sub.
Assemble the back camera in the SUB PCB by using the forceps.

4.4 Assemble the Flap B



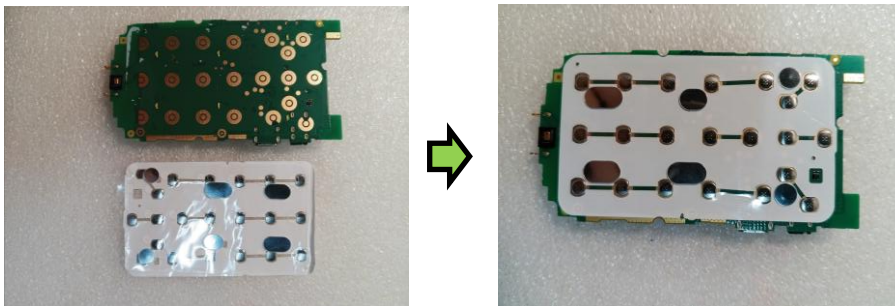
Assemble the SUB PCB to the front housing. Assemble the Screw-on rubber and the screws to the Flap B by screwdriver.

4.5 Assemble components on the upper housing



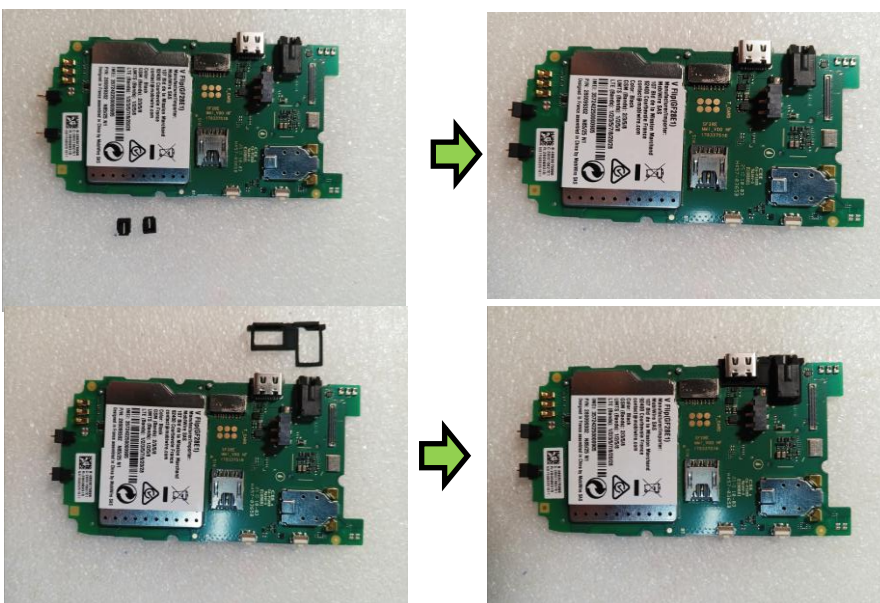
Assemble the Flap B from upper housing by using forceps to push in the special slot carefully.

4.6 Assemble the Dome



Assemble the metal dome to the corresponding position in PCBA.

4.7 Assemble the PCBA

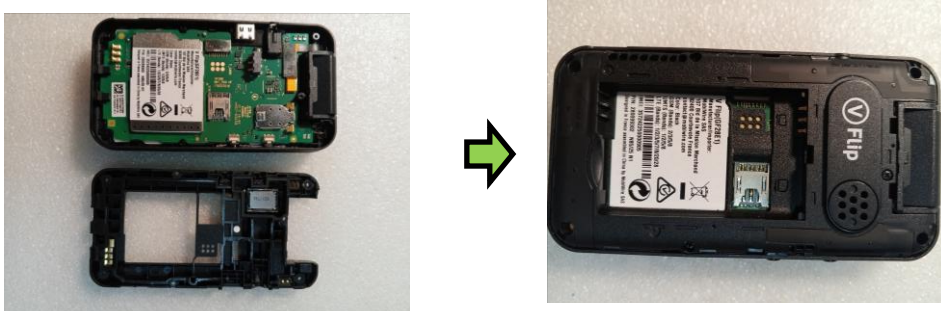


YEPA 2 Disassembly&Assembly procedure



Assemble the Charger Spring clip cover, USB Rubber, MIC Rubber and SOS assembly from PCBA by forceps..Assemble the PCBA to the lower housing by using the forceps.

4.8 Assemble the lower housing assembly



Assemble lower housing to the corresponding position in upper housing.

4.9 Assemble the screw



Assemble the screws (qty=7) to the corresponding position by screwdriver carefully.

4.10 Assemble the Battery cover



Assemble the Battery cover to the corresponding position.