

GX2782

Disassembly and Assembly procedure

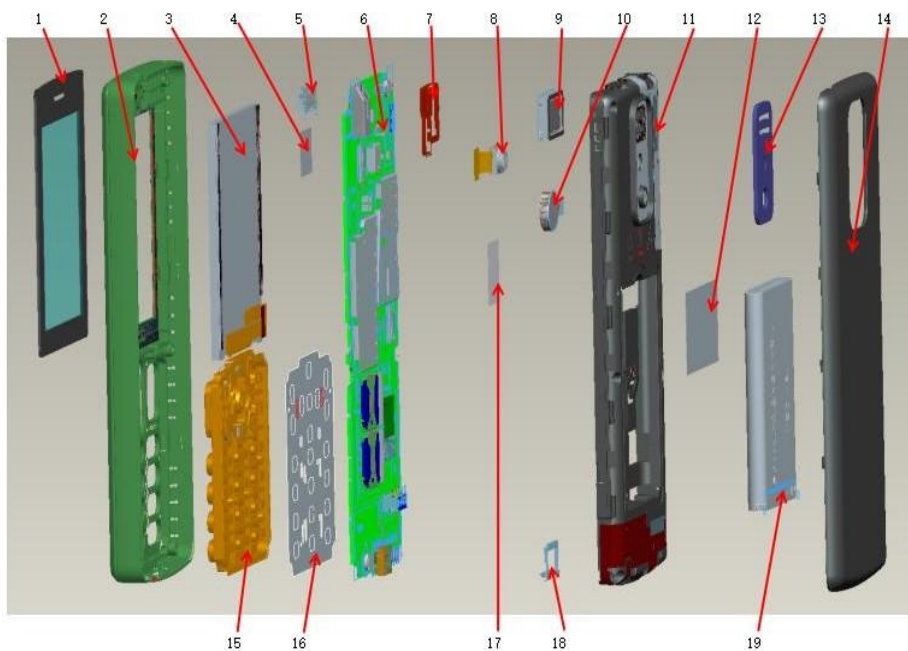
SUMMARY

INTRODUCTION	3
1 TOOLING DEFINITION	4
2 DISASSEMBLING PROCEDURE	5
2.1 REMOVE THE BATTERY COVER AND BATTERY	5
2.2 REMOVE THE SCREWS.....	5
2.3 REMOVE THE REAR HOUSING ASSEMBLY	6
2.4 REMOVE THE PCBA.....	7
2.5 REMOVE THE PCBA COMPONENT	7
2.6 REMOVE THE FRONT HOUSING ASSEMBLY	8
3 ASSEMBLING PROCEDURE.....	9
3.1 ASSEMBLE THE PCBA COMPONENT	9
3.2 ASSEMBLE THE FRONT HOUSING ASSMEBLY	10
3.3 ASSEMBLE THE PCBA.....	10
3.4 ASSEMBLE THE REAR HOUSING ASSEMBLY	11
3.5 ASSEMBLE THE SCREWS	11
3.6 ASSEMBLE THE BATTERY COVER AND BATTERY	12

Introduction

The purpose of this document is to explain how to disassemble WM18&WM18F product.

Detailed steps are mentioned with warnings as below.



1	LCD护镜	LCD LENS
2	前壳	UPPER HOUSING
3	LCD	LCD
4	测试点麦拉	TEST POINT MYLAR
5	听筒	RECEIVER
6	主板	MAIN PCB
7	耳机胶套	AJ RUBBER
8	CAM	CAM
9	喇叭	SPEAKER
10	马达	VIBRATOR
11	后壳	LOWER HOUSING
12	IMEI纸	IMEI PAPER
13	CAM护镜	CAM LENS
14	电池盖	BATT HOUSING
15	按键	KEY
16	按键薄膜	METAL DOME
17	射频导电布	RF SHIELDING ESD CLOTH
18	USB胶套	USB RUBBER
19	电池	BATTERY

GX2782 Disassembly and Assembly procedure

This document is confidential. It cannot be reproduced or communicated without written authorization.

1 Tooling definition

Forceps



Soldering iron



Electric screwdriver



Rigid thin plastic card



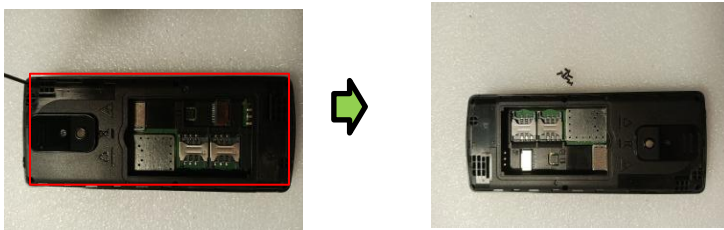
2 Disassembling procedure

2.1 Remove the battery cover and battery



Remove the battery cover by opening the special slot.

2.2 Remove the screws



Remove the screws (qty=6) by using the screwdriver carefully.

2.3 Remove the rear housing assembly

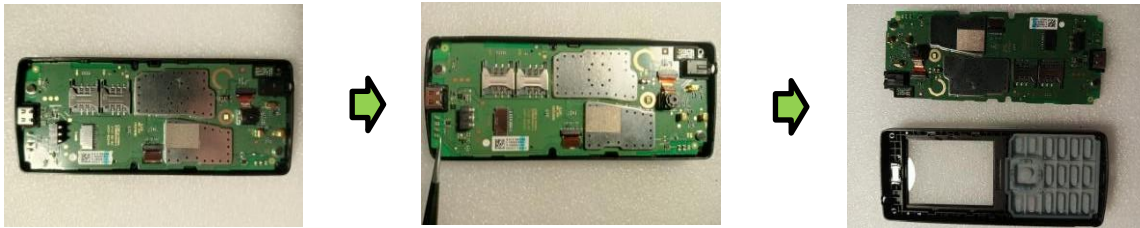


Insert a rigid thin plastic card between the lower housing assembly. Start from the bottom of the product and along the sides to remove the rear housing assembly carefully.



Remove the motor from the rear housing by using the forceps carefully.

2.4 Remove the PCBA

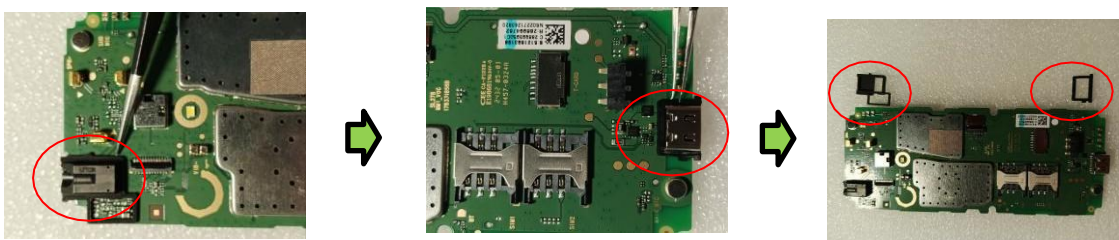


Remove the PCBA from the rear housing with the forceps carefully.

2.5 Remove the PCBA component



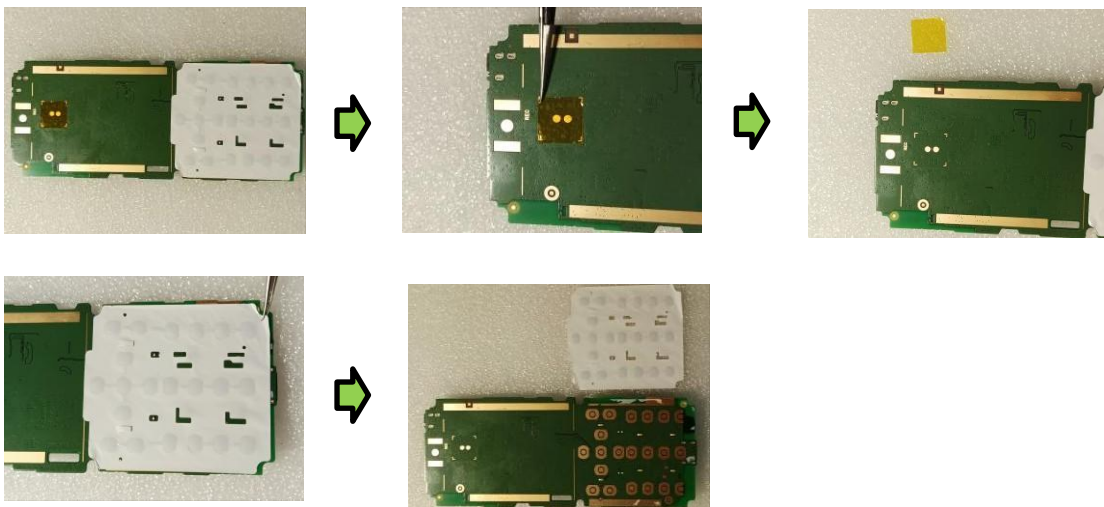
Carefully disconnected the camera from the PCBA with forceps



Carefully remove the earphone rubber cover and USB rubber covers with forceps



Carefully disconnected the LCD from the PCBA with forceps and remove the LCD carefully (**Note: the LCD is attached to the PCBA by back glue**)



Carefully remove the mylar and the key-press film from the PCBA with forceps

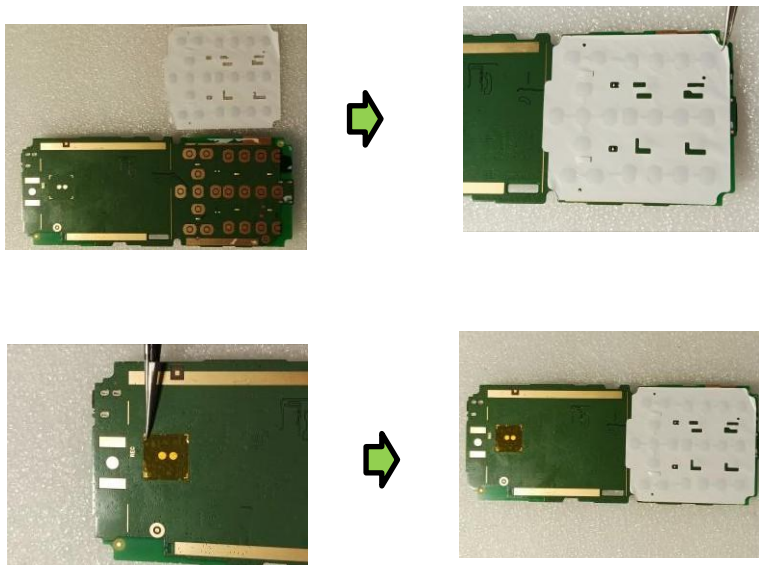
2.6 Remove the front housing assembly



Carefully remove the receiver with forceps follow the arrow direction and remove the silicone button

3 Assembling procedure

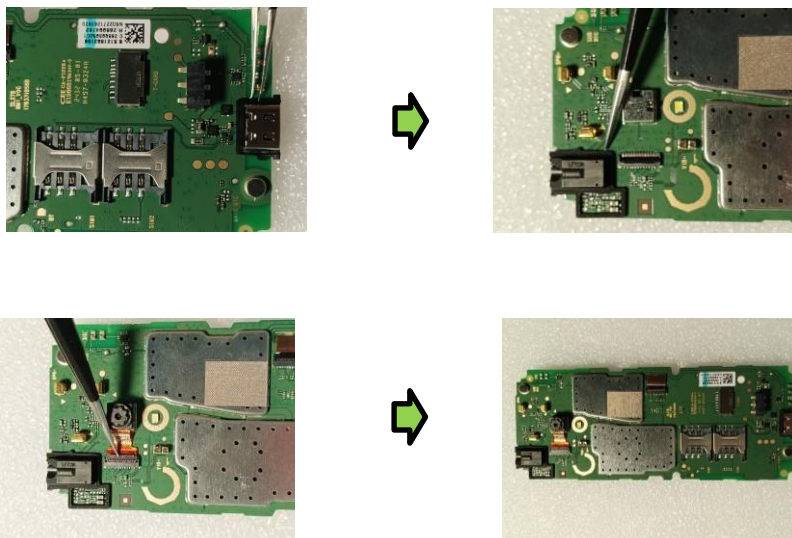
3.1 Assemble the PCBA component



Align with the key film positioning hole and the motherboard hole, press the film to fix, and stick mylar in the screen frame of the main board (inside the yellow box)

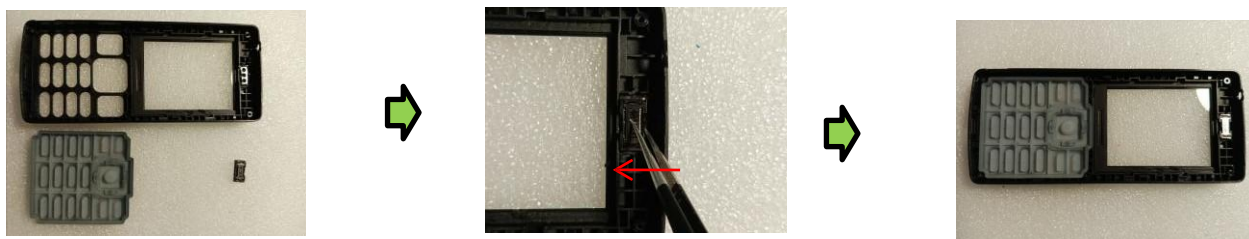


Through the LCD FPC from the PCBA hole and connect it to the PCBA interface, locate the screen wire with PCBA to locate the LCD, and press the LCD to fix the LCD back glue to the PCBA



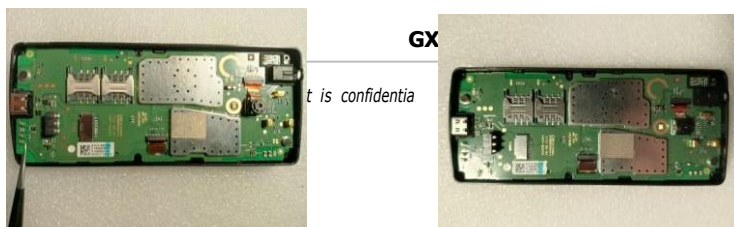
Use forceps to install the earphone sleeve and USB sleeve to the corresponding position of the PCBA and connect the camera to the PCBA

3.2 Assemble the front housing assmebly



Install the receiver in the direction of the arrow and install the silicone button on the front housing

3.3 Assemble the PCBA



bly procedure

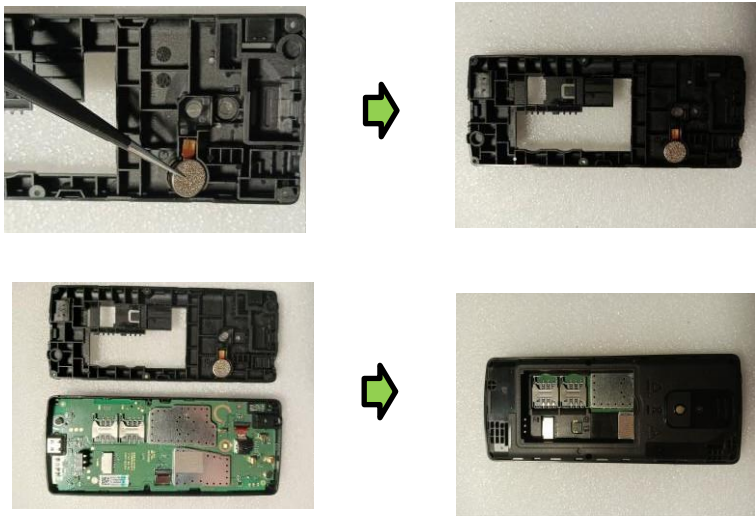
It is confidential

communicated without written authorization.



Assemble the PCBA in the front housing

3.4 Assemble the rear housing assembly



Install the motor with forceps to reach the corresponding position of the rear housing, and install the rear housing and the front housing

3.5 Assemble the screws



Go to the next step in the assembly procedure

confidential information. This document is for internal use only and should not be communicated without written authorization.



Assemble the screws (qty=6) in the rear housing assembly by using the screwdriver carefully.

3.6 **Assemble the battery cover and battery**



Assemble tInstall the battery and the battery cover