

Revision	Date	Author	Object
V00	22/08/2024	Lili.Zhao	Creation of the document

H5112 Disassembly and Assembly procedure

Author	Approval	Validation
AfterSales Engineer	After Sales and Quality Manager	CEO
Lili.Zhao	Yi.zhou	Bo.huang
22/08/2024	22/08/2024	22/08/2024

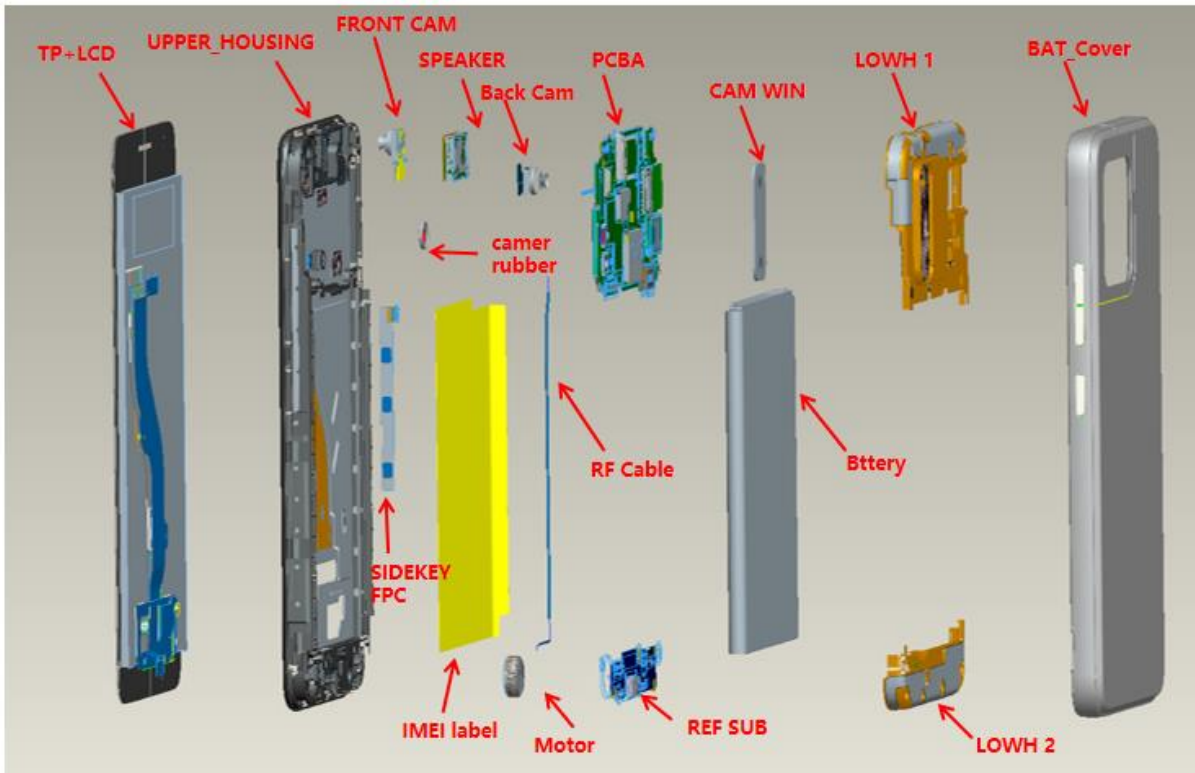
SUMMARY

目录

INTRODUCTION	3
1 TOOLING DEFINITION	4
2 DISASSEMBLING PROCEDURE	6
2.1 REMOVE THE BATTERY COVER.....	6
2.2 REMOVE THE BATTERY	6
2.3 REMOVE THE SCREWS	7
2.4 REMOVE THE LOWER HOUSING1&THE LOWER HOUSING2 ASSEMBLY	7
2.5 REMOVE THE PCBA	8
2.6 REMOVE THE REF SUB	8
2.7 RELEASE THE UPPER HOUSING	9
3 ASSEMBLING PROCEDURE	10
3.1 ASSEMBLE THE UPPER HOUSING.....	10
3.2 ASSEMBLE THE REF SUB.....	10
3.3 ASSEMBLE THE PCBA	10
3.4 ASSEMBLE THE HOUSING1&THE LOWER HOUSING2 ASSEMBLY	11
3.5 ASSEMBLE THE BATTERY	11
3.6 ASSEMBLE THE BATTERY COVER	12

Introduction

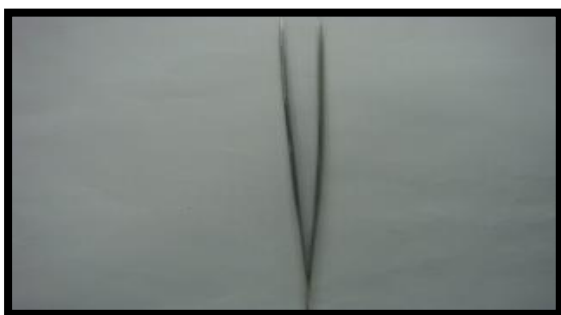
The purpose of this document is to explain how to disassemble H5112 product. Detailed steps are mentioned with warnings as below.



H5112 Disassembly and Assembly procedure

1 Tooling definition

Forceps



Soldering iron



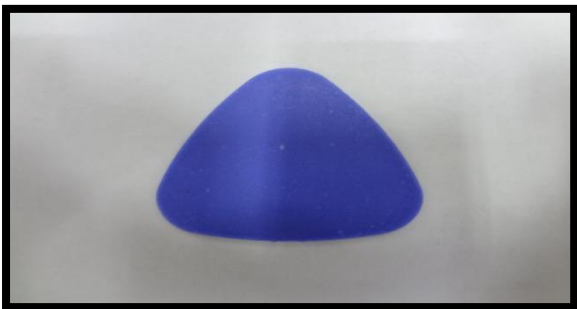
**Electric Phillips
screwdriver 1.5mm**



**Electric Phillips screwdriver
0.8mm**



The blade



Heat gun



H5112 Disassembly and Assembly procedure

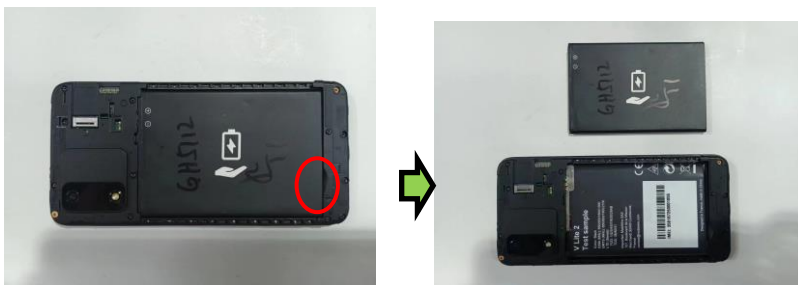
2 Disassembling procedure

2.1 Remove the battery cover



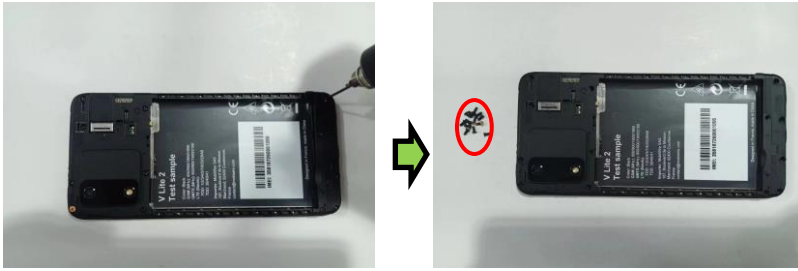
Remove the battery cover by opening the special slot.

2.2 Remove the battery



Remove the the battery carefully.

2.3 Remove the screws



Remove the screws (qty=13) by using the screwdriver carefully.

2.4 Remove the lower housing1&the lower housing2 assembly

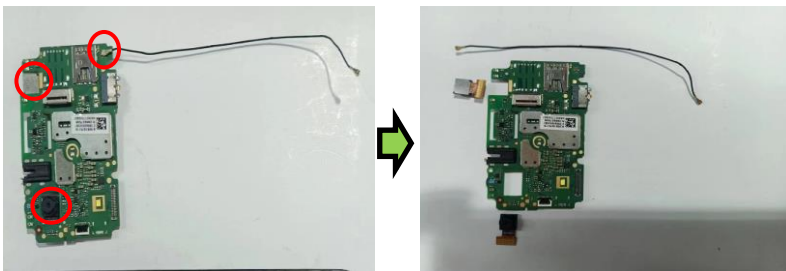


Insert a rigid thing plastic card between the lower1 and upper housing assembly. Start from the bottom of the product, then continue on the sides and remove carefully the lower 1 housing assembly. Remove the lower2 in the same way.

2.5 Remove the PCBA



Use the forceps to open the **LCD FPC &SIDEKEY FPC&RF Cable connection** and remove the PCBA from the upper housing.



Remove the **Front camera&Back camera &RF Cable** from the PCBA.

2.6 Remove the REF SUB



Use the forceps open the SUB FPC connection, remove the SUB PCB from the upper housing assembly.

2.7 Release the upper housing



Remove the **Speaker & SIDEKEY FPC & Motor&Front camer rubber** from the upper housing.

3 Assembling procedure

3.1 Assemble the upper housing



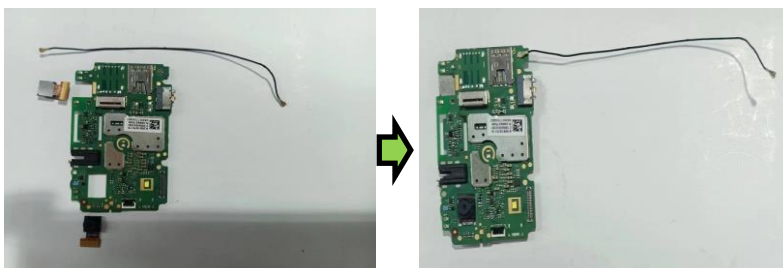
Assemble the **Speaker & SIDEKEY FPC & Motor&Front camer rubber** in the upper housing.

3.2 Assemble the REF SUB



Assemble the REF SUB by using the forceps and install the SUB FPC connection .

3.3 Assemble the PCBA



Assemble the **Front camera&Back camera &RF Cable** by using the forceps and keep carefully.



Assemble the PCBA by using the forceps and install the **LCD FPC &SIDEKEY FPC&RF Cable connection.**

3.4 Assemble the housing1&the lower housing2 assembly



Assemble the Lower Housing1 & Lower Housing2 and fix it with the referenced screws (Qty =13).

3.5 Assemble the battery



Assemble the battery carefully .

3.6 Assemble the battery cover



Assemble the battery cover carefully .