

Revision	Date	Author	Object
V00	29/12/2022	Hao.fang	Creation of the document

# **GH6821 Disassembly and Assembly procedure**

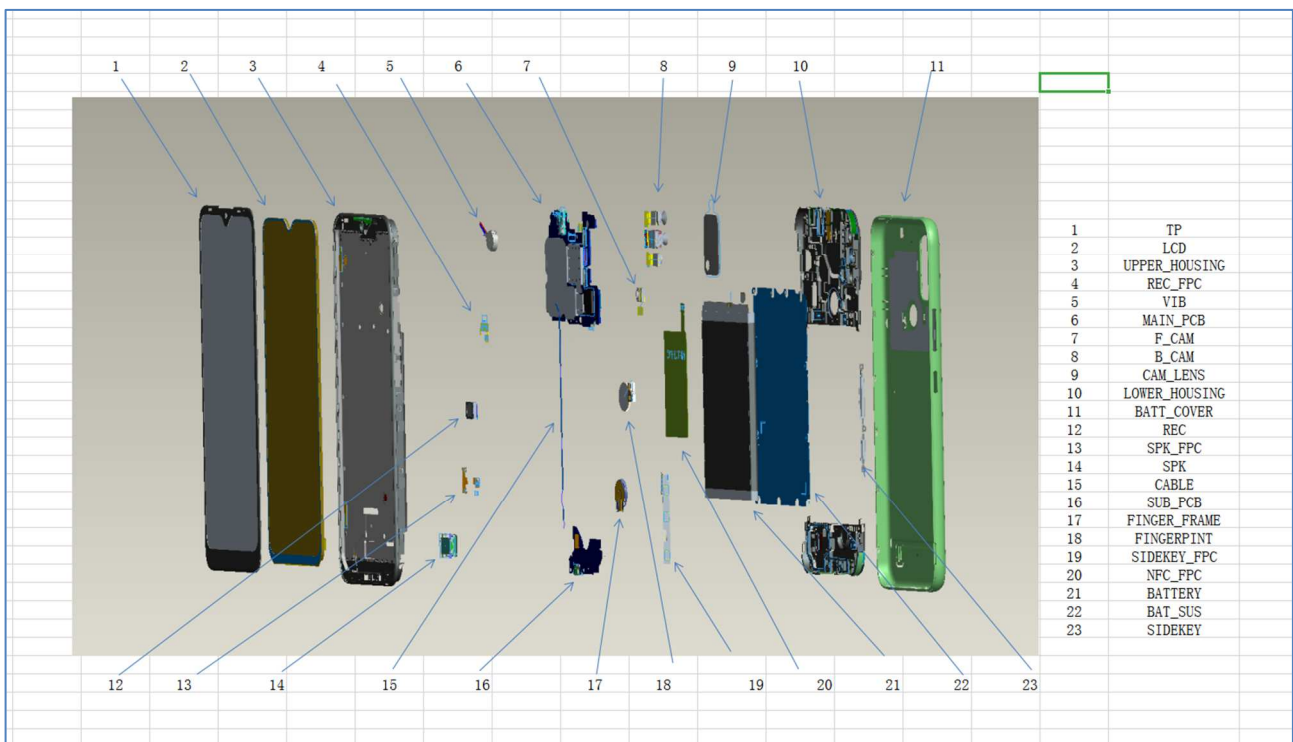
Author	Approval	Validation
AfterSales Engineer	After Sales and Quality Manager	CEO
Hao.fang	Yi.zhou	Bo.huang
29/12/2022	29/12/2022	29/12/2022

## SUMMARY

<b>INTRODUCTION.....</b>	<b>3</b>
<b>1 TOOLING DEFINITION.....</b>	<b>4</b>
2 DISASSEMBLY PRODUCT.....	6
2.1 Remove the battery cover.....	6
2.2 Remove the screws.....	6
2.3 Remove the lower housing assembly.....	7
2.4 Remove the PCBA from the upper housing.....	8
2.5 Remove components from the PCBA module.....	9
2.6 REMOVE COMPONENTS FROM THE UPPER HOUSING.....	10
2.7 REMOVE COMPONENTS FROM THE SMALL PCBA.....	11
2.8 REMOVE COMPONENTS FROM THE UPPER HOUSING.....	11
3 ASSEMBLY PRODUCE.....	13
3.1 ASSEMBLE THE LOWER HOUSING ASSEMBLY.....	13
3.2 ASSEMBLE SMALL PCBA.....	14
3.3 ASSEMBLE THE UPPER HOUSING ASSEMBLY.....	14
3.4 ASSEMBLE SMALL PCBA.....	15
3.5 ASSEMBLE COMPONENTS ON THE PCBA.....	15
3.6 Assemble the PCBA.....	15
3.7 Assemble the lower housing.....	17
<b>GH6821 Disassembly and Assembly procedure</b>	

**Introduction**

The purpose of this document is to explain how to disassemble GH6821 product. Detailed steps are mentioned with warnings as below.



**GH6821 Disassembly and Assembly procedure**

# 1 Tooling definition

**Forceps**



**Soldering iron**



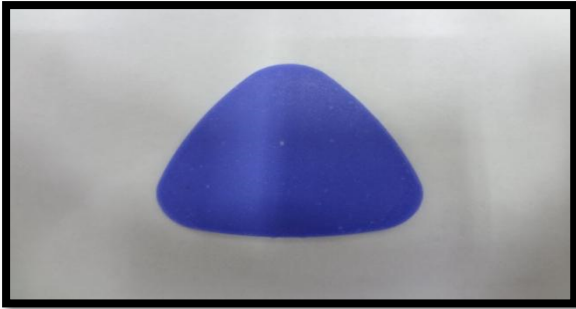
**Electric Phillips  
screwdriver 1.5mm**



**Electric Phillips screwdriver  
0.8mm**



**The blade**



**Heat gun**



## **2 Disassembly product**

### **2.1 Remove the battery cover**



Remove the battery cover by opening the special slot.

### **2.2 Remove the screws**



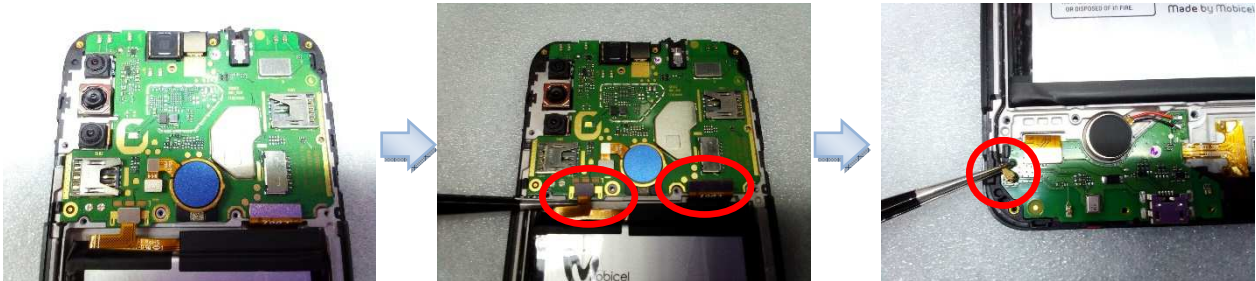
- 1.Remove the screws (Qty=22PCS) by using the screwdriver carefully.
- 2.Remove the Battery cover steel from the upper housing.

## 2.3 Remove the lower housing assembly

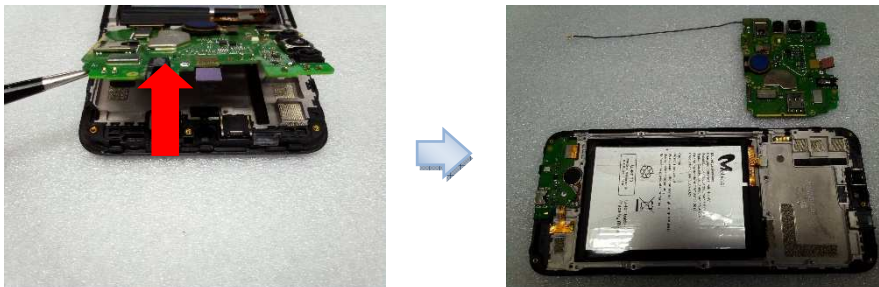


Insert a rigid thin plastic card between the lower and upper housing assembly. Start from the bottom of the product and along the sides to remove the lower housing assembly carefully.

## 2.4 Remove the PCBA from the upper housing



Remove the **Battery** and **LCD fpc.RF cable** by opening the connector.



Remove the PCB module from the upper housing assembly.





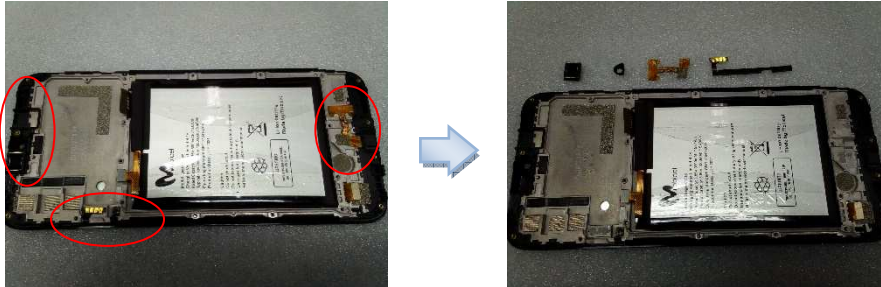
Open the SUB FPC connector by using the forceps, remove the SUB PCB module from the upper housing assembly.

## **2.5 Remove components from the PCBA module**

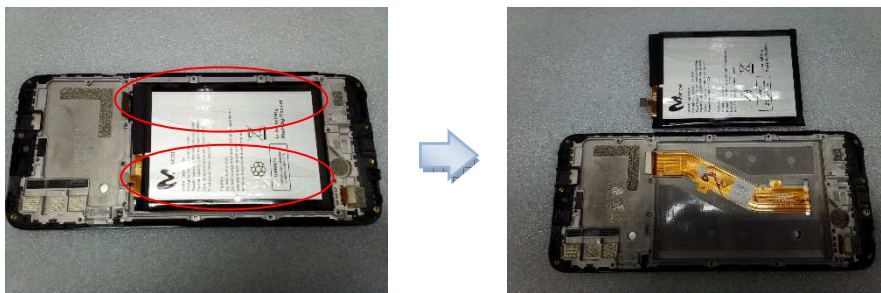


Remove the Back camera and Front camera.RF cable.PS rubber from the PCBA.

## 2.6 Remove components from the upper housing



Remove the **Receiver** and **camera rubber** . **Side key fpc**.**Spk fpc** from the upper housing.



Remove the Battery from the upper housing.

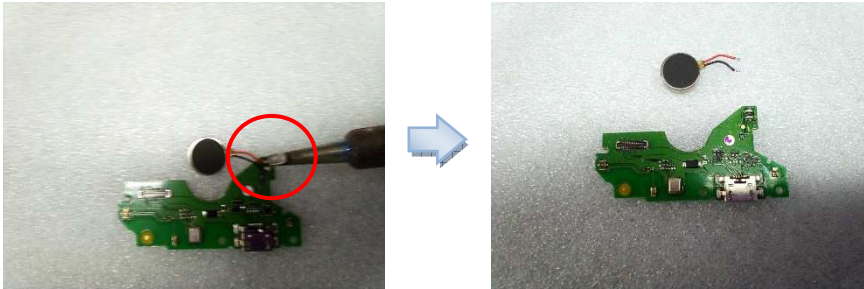
**Method1:** Use the easy pull glue to remove the battery

**Method2:** Specific steps to remove the battery are as follows



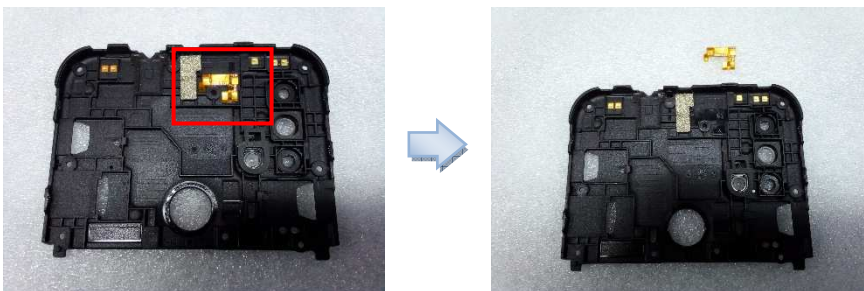
Remove battery  
instruction.xls

## **2.7 Remove components from the small PCBA**

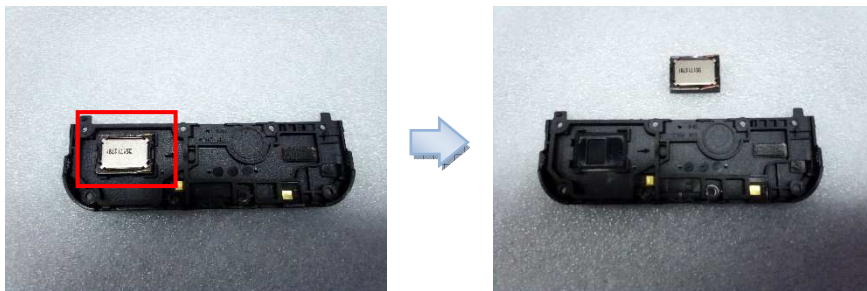


Remove the Motor from the small PCBA.

## **2.8 Remove components from the upper housing**



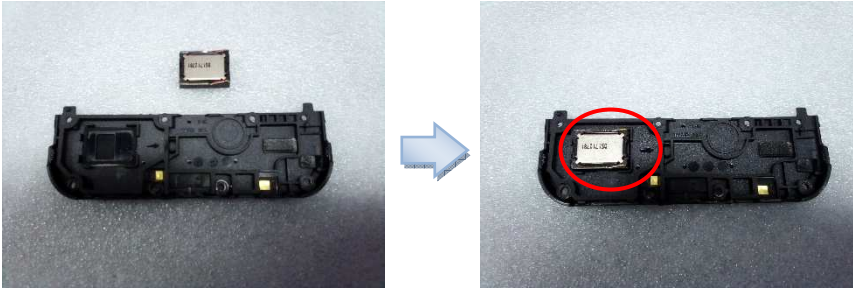
Remove the Spk fpc from the upper housing.



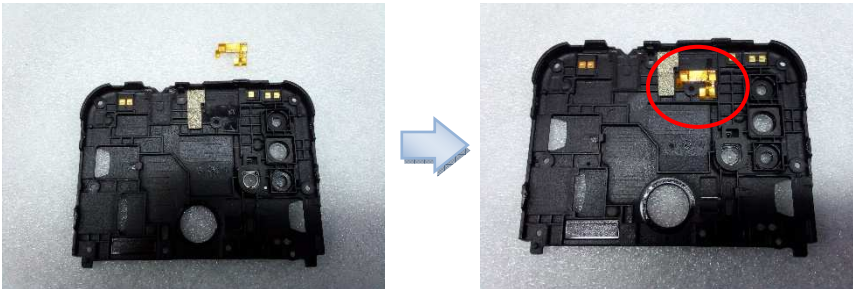
Remove the Speaker from the upper housing.

## 3 Assembly produce

### 3.1 Assemble the lower housing assembly

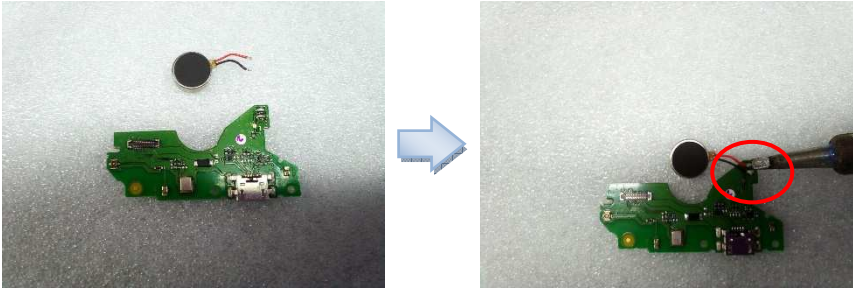


Assemble the speaker on the lower housing assembly.



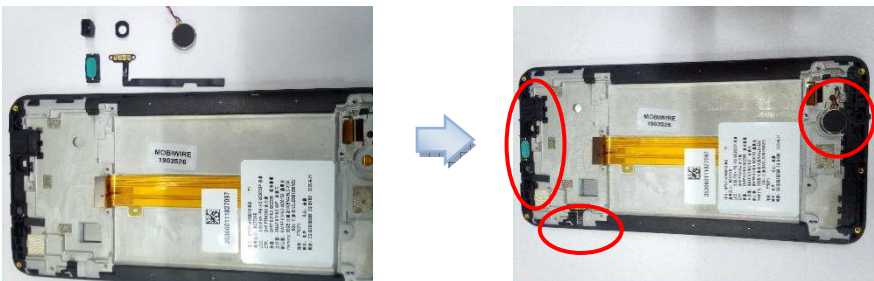
Assemble the Receiver fpc on the lower housing assembly.

### 3.2 Assemble small PCBA



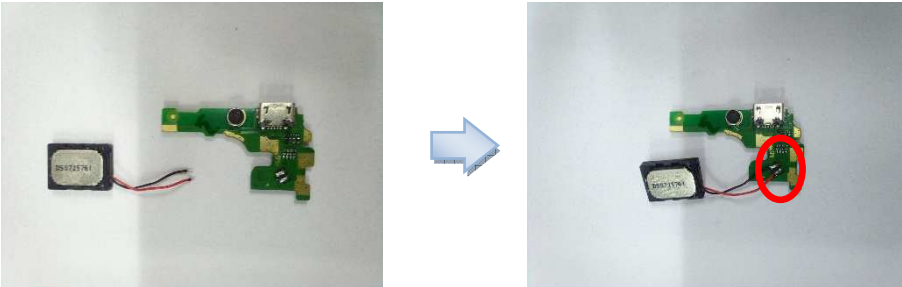
Use forceps and insert the motor into the dedicated connector on the small PCBA.

### 3.3 Assemble the upper housing assembly



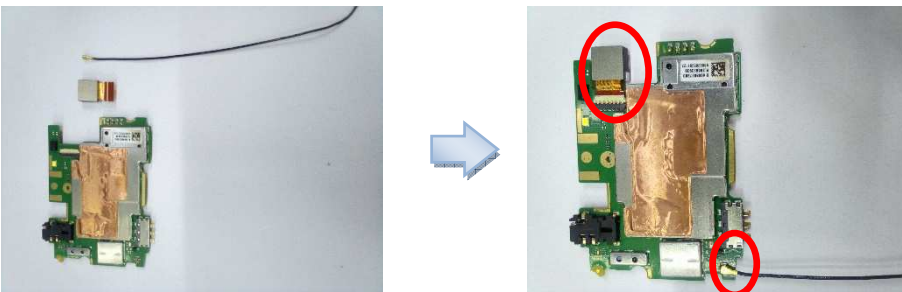
Use the forceps to put the **Receiver.sensor rubber** and **camera rubber** . **Side key fpc.motor** in the special slot of the upper housing assembly.

### 3.4 Assemble small PCBA



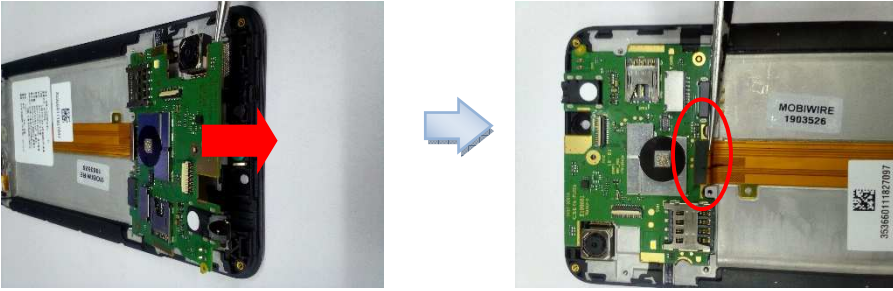
Use forceps and insert the speaker into the dedicated connector on the small PCBA.

### 3.5 Assemble components on the PCBA

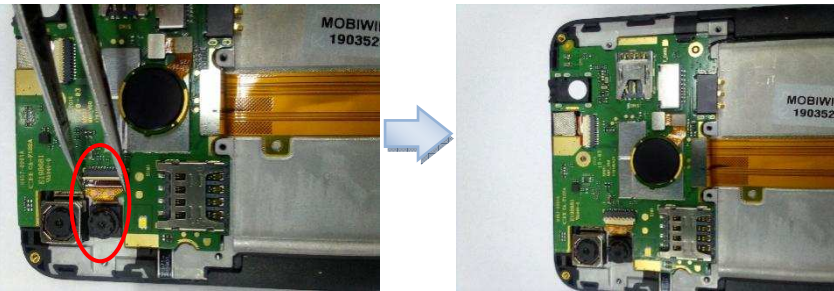


Use forceps and insert the RF cable .Bac camera into the dedicated connector on the PCBA.

### 3.6 Assemble the PCBA



Use forceps and insert the main FPC into the dedicated connector on the PCBA.



Use forceps and insert the **Back camera** and **Fro camera.Fig** connectors into the dedicated connector on the PCBA.



GH6821



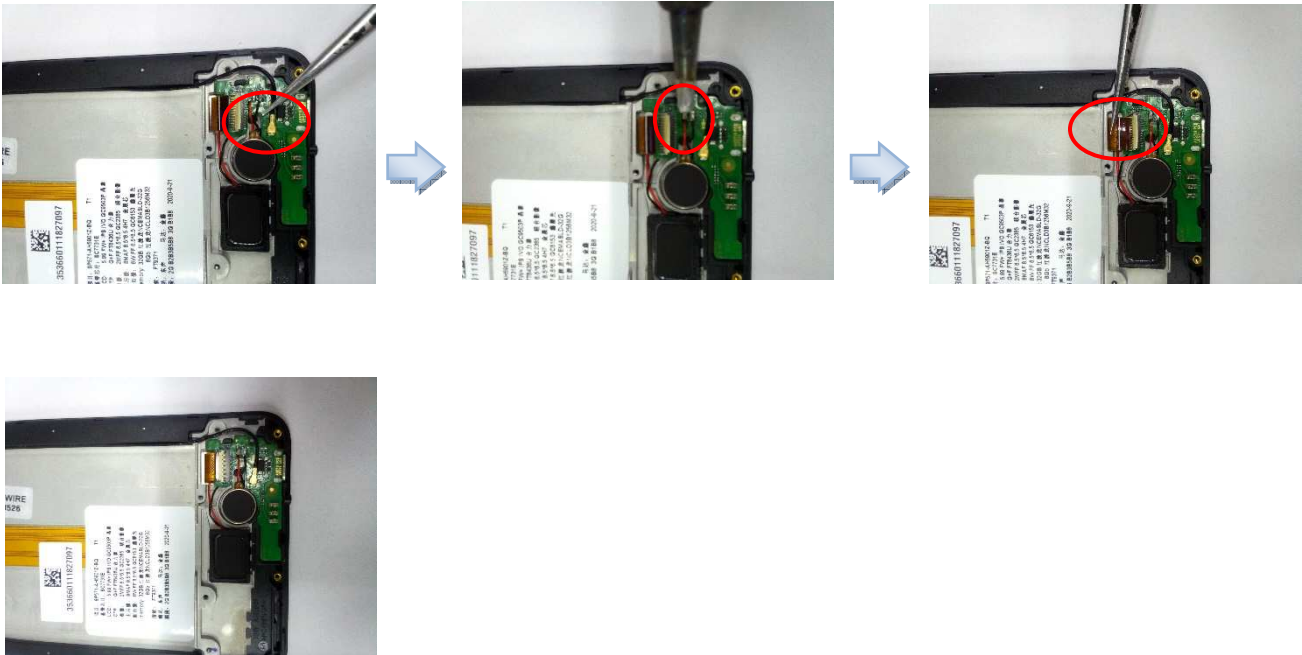
re

ential. It ca

thout written authorization.



Assemble the small PCB on the upper housing assembly.



Use forceps and insert the **main FPC** and **RF cable,motor** into the dedicated connector on the small PCBA.

### **3.7 Assemble the lower housing**



Assemble the Lower Housing and fix it with the referenced screws

### 3.8 Assemble the battery cover



Assemble the battery cover carefully .