

Revision	Date	Author	Object
V00	11/01/2023	Hao.fang	Creation of the document

# H6511 Disassembly and Assembly procedure

Author	Approval	Validation
AfterSales Engineer	After Sales and Quality Manager	CEO
Hao.fang	Yi.zhou	Bo.huang
11/01/2023	11/01/2023	11/01/2023

## SUMMARY

<b>INTRODUCTION.....</b>	<b>4</b>
<b>1 TOOLING DEFINITION.....</b>	<b>5</b>
<b>2 DISASSEMBLING PROCEDURE.....</b>	<b>6</b>
2.1 REMOVE THE BATTERY COVER .....	6
2.2 REMOVE THE SCREWS.....	6
2.3 REMOVE THE LOWER HOUSING ASSEMBLY.....	7
2.4 REMOVE THE REF SUB.....	8
2.5 REMOVE THE PCBA .....	8
2.6 RELEASE THE UPPER HOUSING .....	9
2.7 RELEASE THE LOWER HOUSING.....	10
<b>3 ASSEMBLING PROCEDURE .....</b>	<b>11</b>
3.1 ASSEMBLE THE LOWER HOUSING .....	11
3.2 ASSEMBLE THE UPPER HOUSING.....	12
3.3 ASSEMBLE THE PCBA .....	12
3.4 ASSEMBLE THE REF SUB.....	13
3.5 ASSEMBLE THE LOWER HOUSING .....	14
3.6 ASSEMBLE THE BATTERY COVER .....	14

### H6511 Disassembly and Assembly procedure



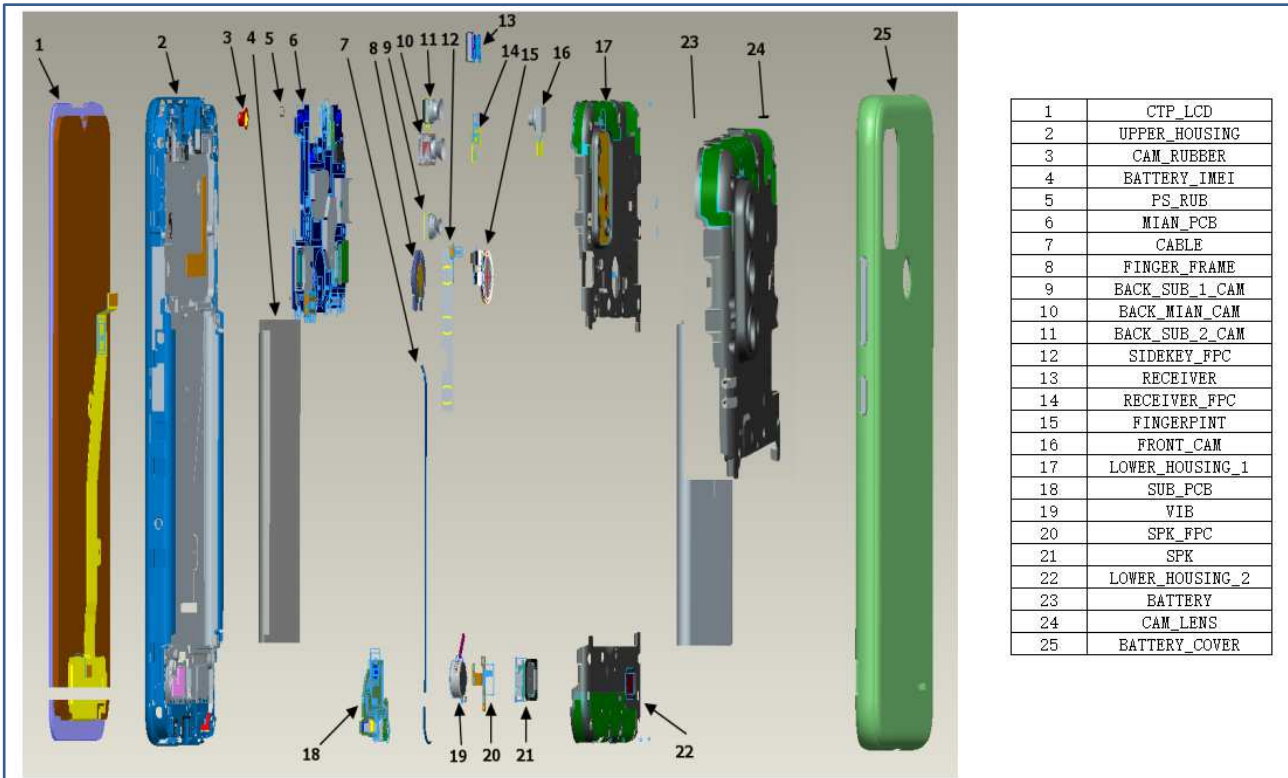
---

**H6511 Disassembly and Assembly procedure**

*This document is confidential. It cannot be reproduced or communicated without written authorization.*

## Introduction

The purpose of this document is to explain how to disassemble H6511 product. Detailed steps are mentioned with warnings as below.



### H6511 Disassembly and Assembly procedure

## 1 Tooling definition

**Forceps**

**Soldering iron**

**Electric Phillips  
screwdriver 1.5mm**

**Electric Phillips screwdriver  
0.8mm**

**The blade**

**Heat gun**

## 2 Disassembling procedure

### 2.1 Remove the battery cover



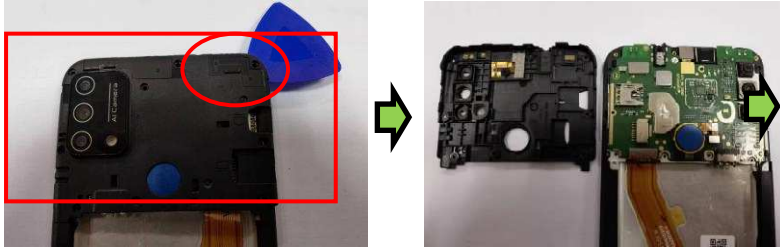
Remove the battery cover by opening the special slot.

### 2.2 Remove the screws

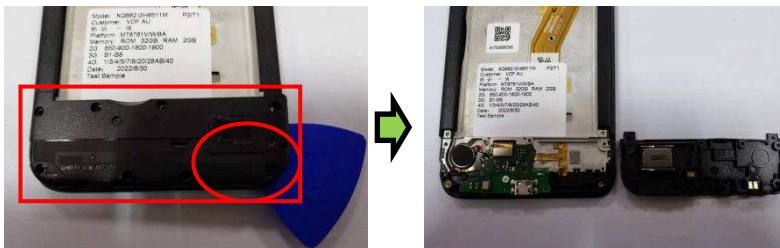


Remove the screws (qty=18) by using the screwdriver carefully.

### 2.3 Remove the lower housing assembly



Insert a rigid thing plastic card between the lowerA and upper housing assembly. Start from the bottom of the product, then continue on the sides and remove carefully the lowerA housing assembly.



Insert a rigid thing plastic card between the lowerB and upper housing assembly. Start from the bottom of the product, then continue on the sides and remove carefully the lowerB housing assembly.

## 2.4 Remove the REF SUB



Use the forceps and soldering iron to open the SUB FPC connection and motor connection and remove the SUB PCB from the upper housing assembly.

## 2.5 Remove the PCBA



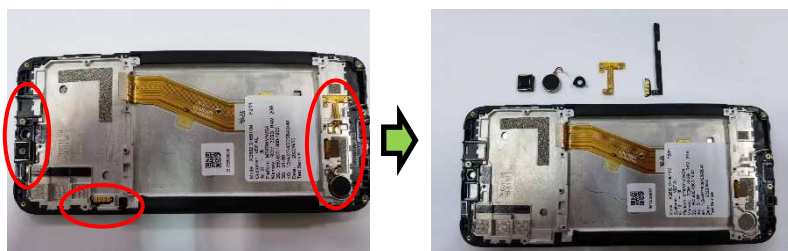
Use the forceps to open the **LCD FPC connection** and remove the PCBA from the upper housing.





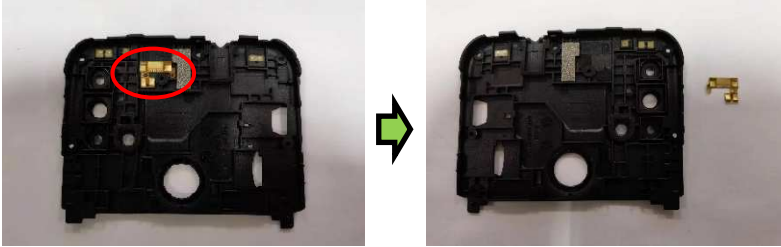
Remove the **Back camera(qty=3)** and **Front camera.RF Cable.Sensor rubber.Fig** from the PCBA.

## 2.6 Release the upper housing

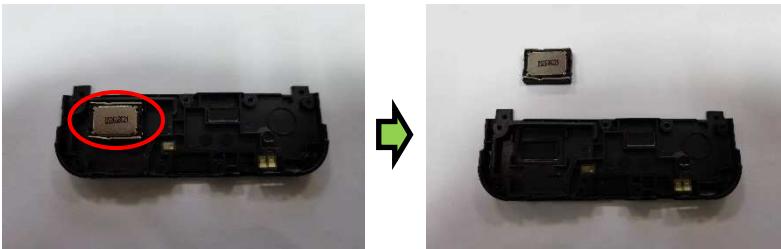


Remove the **Receiver. FPC sidekey** and **Camera rubber.Spk fpc.Motor** from the upper housing.

## 2.7 Release the lower housing



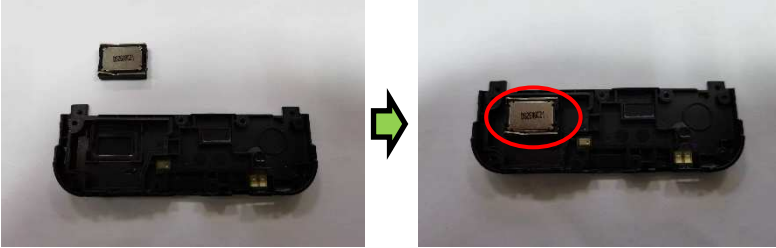
Remove the FPC REC from the lowerA housing.



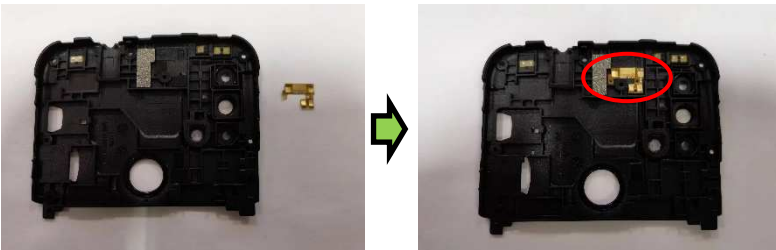
Remove the Speaker from the lowerB housing.

### 3 Assembling procedure

#### 3.1 Assemble the lower housing

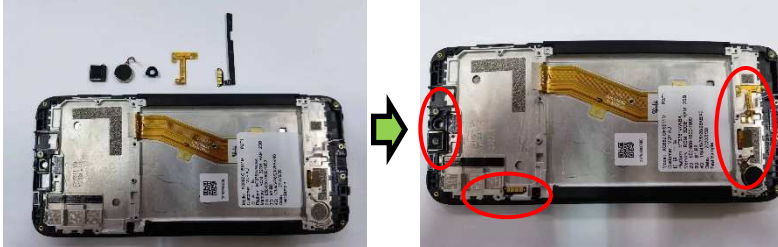


Assemble the Speaker in the lowerB housing.



Assemble the Spk fpc in the lowerA housing.

### 3.2 Assemble the upper housing



Assemble the Receiver. FPC sidekey and Camera rubber.Spk fpc.Motor in the upper housing.

### 3.3 Assemble the PCBA



Assemble the Back camera(qty=3) and Front camera.RF Cable.Sensor rubber.Fig by using the forceps and keep carefully.



Assemble the PCBA by using the forceps and install the LCD FPC connection.

### 3.4 Assemble the REF SUB



Assemble the REF SUB by using the forceps and install the FPC connection and RF Cable connection.

### 3.5 Assemble the lower housing



Assemble the Lower HousingA & Lower HousingB and fix it with the referenced screws (Qty =18).

### 3.6 Assemble the battery cover

